



Around the Block  
QUILT SHOP

March 8, 2024

---

So let's start with the most absurd thing this week.

Two drive through lanes on opposite sides of a building that's half the size of my house, with a parking lot that should be one way only, but isn't, because it can't be.

You got it! Freddy's and Firehouse Subs. I just find it hilarious that of all places to build a restaurant, Firehouse Subs chooses the most inaccessible spot possible in the whole city: the back side of Freddy's. And I get it: Legal and financial stuff impact where one can build, but seriously? On the back side of Freddy's, in a parking lot that no one can move in and out of without running into everything else, and then you add two drive through lanes into the mix? It makes the McDonald's parking lot look lavish.

And maybe the reason they do this is because they usually build in cities that already have limited space. Not Cheyenne. Have you seen the size of the Lowe's parking lot, 75% of which is never used? This is where the legal and financial considerations come into play. I get it. So what's the next best option? Let's squeeze into the tiny space occupied already by Freddy's! Yeah!

Now how do I know this, you might ask? Well, I decided to try a sub sandwich there. I had the time, I was listening to a book. I could wait. Why not.

So I pulled into the "area" designated for these two businesses. Turning left didn't make sense, because there was a line, and no way to squeeze past that line because the parked cars were maybe a foot away from that line of cars....going somewhere. Little did I know at that point.

So I drove around the building, thinking of coming at the drive through from the other direction. It made sense. Left turns all around and into the drive through. Just like McDonald's. Nope. That's not how it worked. Instead, you are supposed to turn left in front of the building, not behind it, and then when you get to the "drive though" part, you have to execute a sharp U turn, right in the corner of the parking lot.

So I'm approaching the cars that are already in line and you can bet no one will let me cut in front. In order to get into that line, I have to drive out of the whole "area," go into the street leading into Lowe's, go into the Lowe's parking lot, turn around, and head back in to Freddy's/Firehouse.

But that couldn't happen. Because the line of cars, the line I wanted to get into, was basically inches from the parked cars, leaving no space in between to drive through. Which also means none of the parked cars that wanted out had no space to do so. So if you're understanding this, there is only

room for one lane of traffic into the lot, with parallel parking along the side. Marvelous planning, I must admit.

And did I mention big ass trucks? Sorry for the language, but one oversized truck in the parking lot brings the whole place to an even more stand still. I won't mention the SUVs. You gotta know that if you're driving monster cars, you park elsewhere and walk. But that's not what happened.

So as I watched this debacle of a traffic jam, I decided that waiting and hoping I could sneak around was futile. So I backed up to the end of the parking lot, turned around, and drove back to the line of cars that had established itself as the "drive through" line.

Personally, I think the customers just made up where the drive through line should start. I didn't see any signs indicating that this was the preferred place to establish a line for Fireman Subs. I did see a lot of cones in the parking lot to prevent some kinds of inappropriate driving, which not very reassuring. But it makes you wonder about the building planner who thought all of this up and in the end you wind up having to put up cones instead of signs to explain where not to drive in the parking lot. Maybe there were signs that I missed. So maybe I should say there should be BIG-ASSED signs directing traffic. Okay, I'm getting a little carried away here.

For fun someday, park over by the NorthStar pharmacy and watch newbie customers circumnavigate that parking lot as they try to figure out the best way to get to the pharmacy. There isn't. But it takes people a couple of tries to figure that out. Then watch how long it takes them to figure out how to get back to the main road. It's a lot more entertaining than watching the traffic around the roundabout on Converse.

Anyway, I backed out, pulled around and got into line. Once in line one of those big-ass trucks in the corner needed to back out. At the same time, an over sized SUV next to the truck decided to pull out. Now this was interesting. Neither could get out without backing into the drive thru lane with all of the waiting cars that couldn't move. And even if the truck could get into a drive forward position, there was no room between the drive through line cars and all the cars parallel parked in the lot.

This was like one big clown car that no one could just topple out from. Because there was only ONE lane of traffic planned for the space.

So I watched as the truck pulled back into his space to wait. Which gave the SUV a chance. It took a while. Back, forward, slight turn, back forward, slight turn, until the SUV was basically parallel to the parking spot—fortunately, no one was parked in the slot next to the SUV.

Success! The SUV was able to squeeze out past the drive through line. That gave the truck hope. Now in all this time, the drive through line hadn't moved. The truck starts to inch forward, employing the back and turn an inch at a time strategy, and pulling within an inch of my driver's door. That's how much space there isn't in this parking lot. And I thought to myself, what a wonderful time for a car accident. Come one inch further back and my car is in the shop for 6 weeks. And nobody gets their food. In the end, he made it out.

So why did I put myself through all of this, you ask?

Well, once in line, you're committed. You can't get out even if you wanted to. And I had a good book and didn't really mind the 30 minute wait. But I probably won't be back until they fix the parking lot, which I think is possible. But clearly, nobody asked me.....

So was it worth it, you ask?

Ah...yes. It was good. But the next time I want an Italian style sub, I'll go to Mondellos. Better parking, you can call ahead, it's local, and that same style Italian sub is still the best one in town.

And if you remember how this story started about the most absurd thing this week? Implying there were more? You betcha. But that involves finishing watching Aquaman 2, and I'm not ready to do that yet.

---



**Delta Kappa Gamma**  
*International Society of Women in Education*

## Used Book Sale

March 2&3 and 9&10

*Sat 2nd 8am to 5pm Sun 3rd 9am to 4pm*  
*Sat 9th 8am to 5pm Sun 10th 9am to 2pm*

In the former Big Lots in Cheyenne Plaza  
3741 East Lincolnway  
(Next to Sportsman's Warehouse)

**Please donate used books:  
January 29 through February 26**

**Collection locations:**  
**Sale site (preferred option) hours are:**  
Daily 9am - 1pm  
Thursdays and Sundays 9am to 4pm

Or drop books at  
**Safeway Both Albertson's  
Gold's Gym JAX YMCA**

If very large donation (within 10-mile radius),  
or unable to get to a collection location  
call **630-2026, 630-3682** or **632-8867** for  
appointment. (Leave a message.)  
Books must be boxed, - on porch or in garage.

## Spring 2024 Challenge

Buy a scrap bag (or more than one), make a quilt (top is sufficient), and bring the top to the store by JUNE 1--come to the Free block of the Month to show it, if you want. Your name will go into a drawing for a \$100 gift certificate! For each scrap bag you buy, you can enter another quilt. 3 bags, 3 quilts. 1 bag, only 1 quilt. You can also mix and match the bags, so you can buy multiple bags, swap the fabrics back & forth and make as many quilts as you buy bags. Minimum size on the quilts is 50" X 60". You can add any other fabrics to the mix as you like, but you must use some of the scraps from the bag in your quilt.

We will take a picture of you and your bag(s) when you buy so we can at least spot a couple of the scrap fabrics in your quilt. Any quilt you make counts, even quilts you make in class. Just be sure to remember which fabrics came out of the scrap bags, in case you're asked.

---

---

## New Fabric

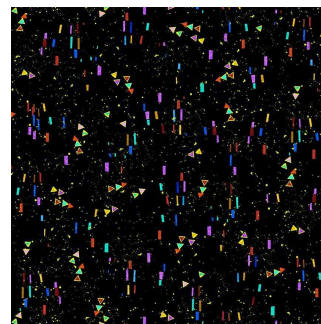
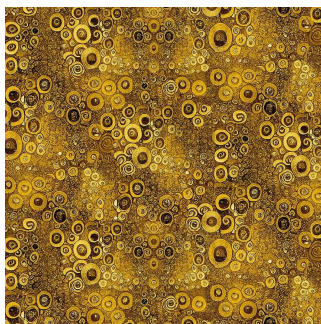
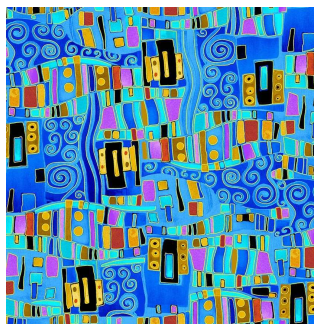
Lots of notions from Checker. Rulers, mats, blades, cutters, wool, patterns, chalk markers, purse hardware.

---

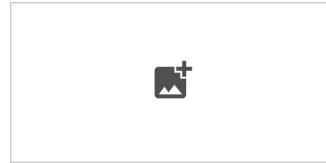


From Hoffman

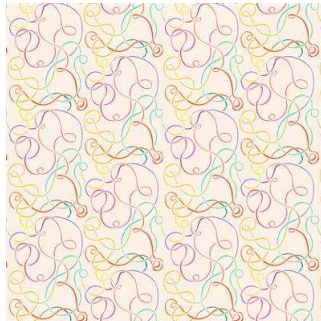
---



From Timeless Treasures



From Riley Blake



From Clothworks

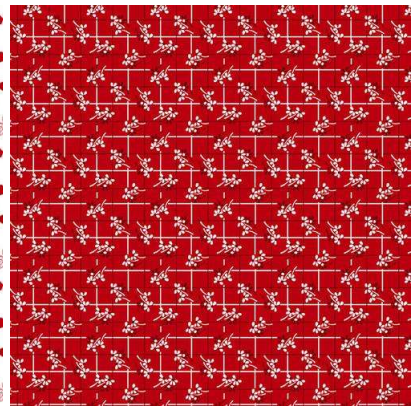
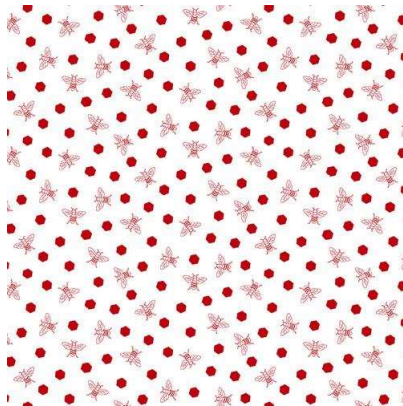
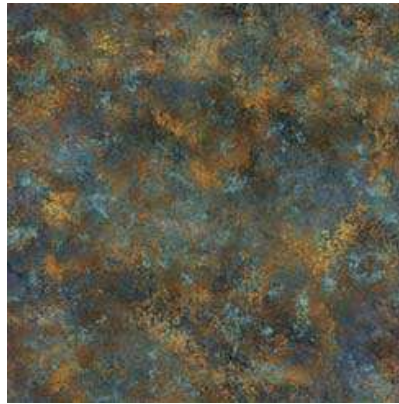


From Hoffman





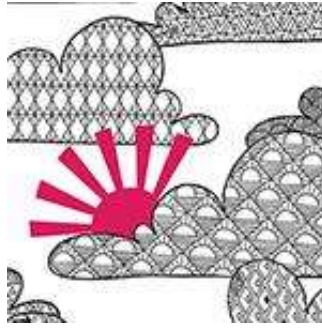
From Quilting treasures



From Studio E



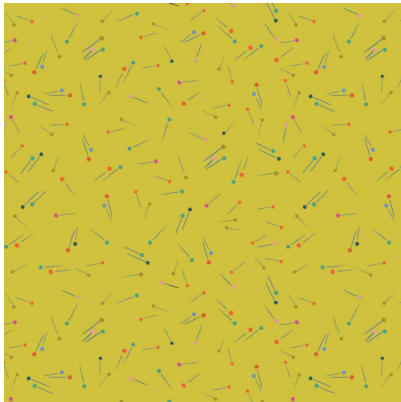
Windham override



override

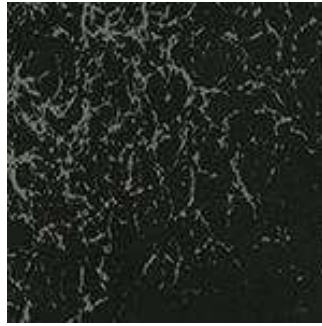


override



Dashwood

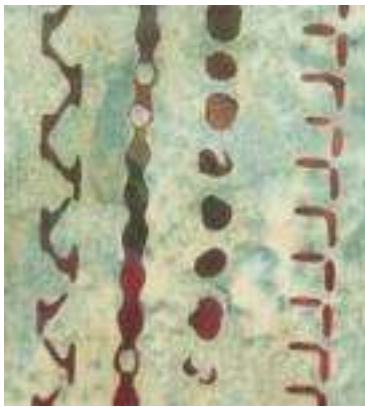




Windham



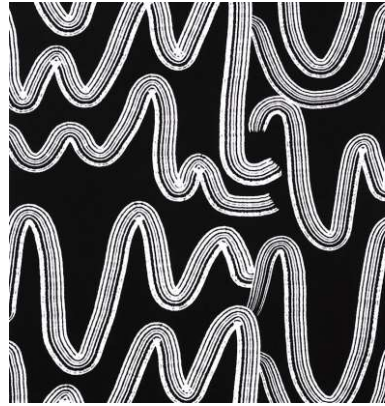
Hoffman





Batik from Anthology





The Ghostlies from AH

---



From Clothworks

These are 2 1/2" strips and 10" squares

---



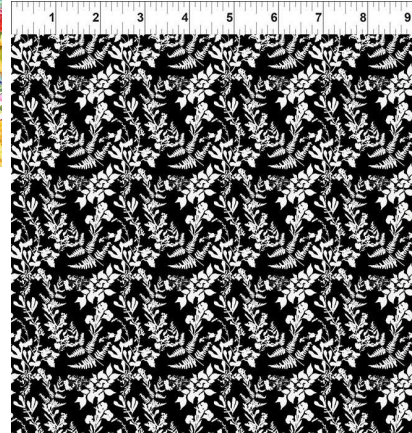
From Timeless Treasures: 2 1/2" Strips

From Timeless Treasures: 10" Squares



From Marcus Bros

---



In the Beginning




---



---

## Class Notes

### Disappearing 9- patch & Disappearing Triangles Classes

Fabric requirements: Disappearing 9-patch: 53: X 66" (66" X 80" (80" X 8")

Need: 5" squares 48 (80)(100); 'sashing' 1 yard of dark (1 1/2 yard) (2 yds); center (contrast color) 1/2 yd (3/4) (3/4). You can precut everything into 5" squares. You need 48 (80)(100) 5" squares of the dark and 12 (20)(25) squares of the contrast color.

Disappearing Triangles: 40 5" squares of print fabrics & 40 7" squares of various tone on tone fabrics that coordinate with the 5" squares. Also, 1/2 yard of white or background; 1/4 yard black or a contrasting dark fabric. Cut the white and black fabric into 5" squares. Need 24 white squares and 10 black squares.

---

## MARCH 2024

Sunday	Monday	Tuesday	Wednesday	Thursday	Friday	Saturday
					<b>1</b>	2 <b>BOM 10:30</b>  Tula Pink Butterfly Quilt 1-5
3 <b>Beginning Quilt 1-4</b>	<b>4</b>	<b>5</b> Hand work Club 2-5	<b>6</b> Long Arm class 10:30	<b>7</b> Long Arm Rental Day	<b>8</b>	9 Embroidery Club 10-noon  Disappearing 9- patch 10:30-4
10 <b>Beginning Quilt 1-4</b>	<b>11</b>	<b>12</b> Hand work Club 2-5	<b>13</b> Knit Pickers' Club 2-5	<b>14</b> Long Arm Rental Day	<b>15</b>	16 <b>National Quilt Day—Demos at noon</b> Strip Quilts 10:30-4
17 <b>Beginning Quilt 1-4</b>	<b>18</b>	<b>19</b> Hand work Club 2-5	<b>20</b> Long Arm class 10:30	<b>21</b> Long Arm Rental Day	<b>22</b>	23 Hunter Star Quilt 10:30-4
24 <b>Beginning Quilt 1-4</b>	<b>25</b> <b>Full Moon</b>	<b>26</b> Hand work Club 2-5	<b>27</b> Knit Pickers' Club 2-5	<b>28</b> Long Arm Rental Day	<b>29</b> Good Friday	30 Scrappy Bear Paw 10:30-4
<b>31</b> Easter Sunday  CLOSED						<b>Color of the month: green</b>

## APRIL 2024

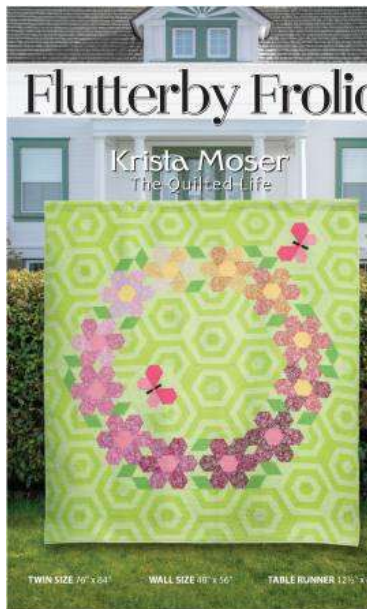
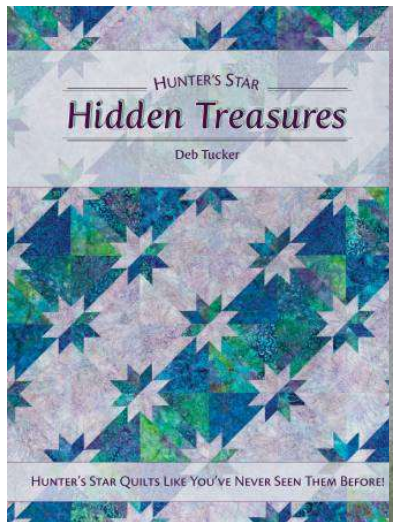
Sunday	Monday	Tuesday	Wednesday	Thursday	Friday	Saturday
	<b>1</b>	<b>2</b> Hand work Club 2-5	<b>3</b> Long Arm class 10:30	<b>4</b> Long Arm Rental Day	<b>5</b>	6 BOM 10:30 Machine Binding 1-4
7 CLOSED	<b>8</b>	<b>9</b> Hand work Club 2-5	<b>10</b> Knit Pickers' Club 2-5	<b>11</b> Long Arm Rental Day	<b>12</b>	13 Embroidery Club 10-noon Disappearing Triangle Quilt 1-5
14 CLOSED	<b>15</b>	<b>16</b> Hand work Club 2-5	<b>17</b> Long Arm class 10:30	<b>18</b> Long Arm Rental Day	<b>19</b>	20 Alligator Alley Quilt 10:30-4
21 CLOSED	<b>22</b>	<b>23</b> Hand work Club 2-5 Full Moon	<b>24</b> Knit Pickers' Club 2-5	<b>25</b> Long Arm Rental Day	<b>26</b>	27 Big Foot Quilt 10:30-4
28 CLOSED	<b>29</b>	<b>30</b> Hand work Club 2-5				Color of the month: yellow

MAY 2024						
Sunday	Monday	Tuesday	Wednesday	Thursday	Friday	Saturday
			1 Long Arm class 10:30	2 Long Arm Rental Day	3	4 BOM 10:30 T-shirt Quilt Part I 1-5
5 CLOSED	6	7 Hand work Club 2-5	8 Knit Pickers' Club 2-5	9 Long Arm Rental Day	10	11 Embroidery Club 10-noon T-shirt Quilt Part II 1-5
12 CLOSED	13	14 Hand work Club 2-5	15 Long Arm class 10:30	16 Long Arm Rental Day	17	18 Strip Quilts 10:30-4
19 CLOSED	20 <input type="text" value="(Ctrl)"/>	21 Hand work Club 2-5	22 Knit Pickers' Club 2-5	23 Long Arm Rental Day <b>Full Moon</b>	24	25 Kirista Moser Weekend: Flutterby Frolic: Kirista Moser Quilt 10:30-4
26 Kirista Moser weekend 1-5	27 Kirista Moser weekend 10:30-5	28	29	30 Long Arm Rental Day	31	Color of the month: whites

1-r Alligator Alley; Decoupage;  
Wildflower; Stack n' Whack;  
Travel Duffie; Butterfly; Jelly  
Roll Race Quilt; Disappearing 9-  
Patch; Disappearing Triangles;  
Flutterby; Hunter's Star; Big Foot







Please look on the calendars above for times and dates.

### Ongoing Classes & Clubs

**Block of the Month** First Sat of month 10:30-11:15 FREE Barb Boyer

Join at any time. You get a free fat quarter if you come to class with the previous month's completed block. This year the challenge will be ... come in January and find out!

**Hand Embroidery Club** 2<sup>nd</sup> Sat. of the month, 10-noon FREE Kathy Sconce  
If you want to learn to hand embroider or just brush up your technique, join us on the second Saturday of the month from 10 to noon. You can work on your own projects or you can join the project we are doing, which are sheep! From Crabapple Hill

**Knit Pickers' Club** 2<sup>nd</sup> and 4<sup>th</sup> Wed of each month, 2-5 Carol Moler  
Come join our Knit Pickers= Club. We knit 2 days a month every second and fourth Wednesday, from 2-5. The Club is open to all skill levels and, despite the name, includes crocheters as well. We want to share what we've learned, find new patterns, and simply just sit and knit. We may work on some felting projects, fingerless mittens, mittens, and socks. We can even help you get started—teach you the basics.

**Hand Sewing Club** every Tuesday afternoon 2-5  
This club is open to everyone. Bring your hand sewing (embroidery, binding, knitting, crochet, etc) and sit & stitch.

## March Classes

### **Disappearing 9-Patch Sat Mar 9 1-4 \$35**

An oldie but a goodie! This quilt uses 5" squares (the more squares you have, the bigger the quilt, your choice). The basic concept is to make 9-patches, cut them apart & sew them back together to make a unique design. If you need a quick quilt for a graduation present, this quilt is perfect.

### **Let's Strip! Quilts Sat March 16; May 18; July 20; Sept 21 and Nov 16 10:30-4 or 5 Jean Korber and Barb Boyer \$130**

March's quilt is Tulip Patch. You will need 25 assorted green strips for stems and 25 assorted strips for the tulips, plus background (and borders, if you want them). This quilt teaches different ways to use the 45 degree flip method for making flying geese-styled blocks.

### **Hunter Star Sat Mar 23 10:30-4 \$40 Barb Boyer**

The classic Hunter Star quilt is made simple by using Deb Tucker's Rapid Fire Star ruler. The book, Hidden Treasures, has all sorts of ideas for settings and color choices for your Hunter Star. The quilt is simple and elegant and is one of those classic quilts you need to make.

### **Scrappy Bear Paw Sat Mar 30 10:30-4 \$40 Barb Boyer**

Another classic pattern is the Bear's Paw. This pattern was one of the first quilts I really wanted to make. 40 years later, mine is done—the top at least. In class we will talk about various ways to set the Bear's Paw and you'll also get the "Wyoming Bear's Paw" block, which is a bear's paw inside a bear's paw. Very cool.

### **NATIONAL QUILT DAY SATURDAY MARCH 16 DEMOS AT NOON**

We will have a special sale for National Quilt Day and I'll be demonstrating how to make mitered borders the easy way. The only way. We may have some other demos and activities going on, TBA.

## April Classes

**Machine Binding Sat April 6 1-4 \$45 Jean Korber**

This is hands on class. You will need a small project (10" to 40", table runner, small wall hanging, place mat, etc) that is quilted and ready for binding. In class Jean will show you how to cut your binding, press it, and stitch it down (DO NOT CUT YOUR BINDING IN ADVANCE), how to stitch it down & miter the corners and then how to apply decorative stitches to the edge. In class you will cut your binding, stitch it to your project, miter your corners and then stitch it down by machine on the other side, using decorative stitches.

**Disappearing Triangle Quilt Sat April 13 1-4 \$35 Barb Boyer**

This quilt is similar to the Disappearing 9-patch, but it takes the concept to a new level. This is another of the 9-patch, cut apart & put back together quilt, but it adds a triangle feature, that when made with bright colors is spectacular!

**Alligator Alley Sat April 20 10:30-4 \$40 Jean Korber**

This simple triangle quilt can be cut and sewn in a day. Okay, maybe not a day, but it is easy and yet looks complicated. We have some very cool fabric that we are holding back for class members—if you are interested in using this fabric, let me know IMMEDIATELY! We have limited quantities and we're only selling it to class members. But the cool thing about this quilt, is you can use any fun fabric you like and you'll get a gorgeous quilt.

**Big Foot Quilt—Yeti by any other name Sat April 27 10:30-4 \$45 Jean Korber**

This is an Elizabeth Hartman quilt. With luck, we will have some more Big Foot fabric in the store by class time, but right now we have some great background fabrics that will make your trees and Big Foot look like they are in the middle of a forest. Of all the Elizabeth Hartman quilts, this is one of the easiest. And if you want more Big Feet Big Foots? in your quilt, you can add extra. You can also make them all different colors, because, after all, they are magical.

## May Classes

**T-Shirt Quilt Sat May 4 & 11 1-4 \$45 Barb Boyer**

So you've got all these t-shirts and want to turn them into a quilt? It's easy, but you need the right tools. The class is taught in 2 parts: First, preparing your t-shirts, and second, designing your top—which is where I come in, because I can help with all of the math that might be involved.

**Let's Strip! Quilts Sat May 18; July 20; Sept 21 and Nov 16 10:30-4 or 5 Jean Korber and Barb Boyer \$130**

May's quilt is Daydream, which is essentially a form of a spiderweb quilt. The blocks are made from triangles cut from strip set panels. By making more stripped panels you can make the quilt as big as you like. This is a great way to use up scraps, even ones that aren't 42" wide.

**Krita Moser weekend, with a Flutterby Focus! Sat-Mon May 25-27 Jean Korber and Barb Boyer Saturday class only \$45, full weekend \$125**

This is an all things Krista Moser weekend. Saturday, Jean will teach the quilt Flutterby. Then you can leave your machines and come back Sunday afternoon (and we can talk about this, if you want to come earlier) and Monday for all or part day sewing. Jean will be here for select times if you need to ask her specific questions about any Krista Moser quilt you are working on. Otherwise, treat the weekend like a retreat, where you get to sew all day, at a quilt store (with handy products available) and excellent support for all your questions. We don't offer many retreat weekends, so take advantage of this holiday opportunity.

\*\*\*\*\*

## CLUBS

### **HAND EMBROIDERY CLUB FREE!**

If you want to learn to hand embroider or just brush up your technique, join us on the second Saturday of the month from 10 to noon. You can work on your own projects or you can join the project we are doing.

\*\*\*\*\*

### **Hand Work Club FREE!**

Every Tuesday afternoon from 2-5, join us to just sit & hand stitch, crochet, bind, or knit group. Bring what you're working on, sit up at the table in front by the window and work on your projects for a while. You can get advice & suggestions from your fellow quilters and share your experiences about your projects.

\*\*\*\*\*

### **Knit Pickers' Club FREE!**

This is another get-together class to sit & knit, work on our projects, share information and get some help. We will share techniques, suggest patterns, but mainly we'll sit & knit (or pick). 2<sup>nd</sup> & 4<sup>th</sup> Wednesdays 2-5.

\*\*\*\*\*

### **Block of the Month Club FREE!**

First Saturday of the Month, 10:30-11:15. Join at any time. You get a free fat quarter if you come to class with the previous month's completed block.

\*\*\*\*\*

### **Toad Toters Club**

On full moon days (as noted in the calendar) you will get 20% off all purchases (not otherwise discounted) that you can fit in your bag. You must bring your bag to participate.

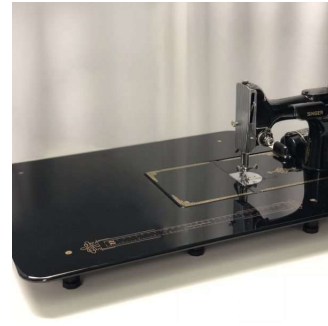
Full Moon Days: January 25; February 24; March 25; April 23; May 23

#### Discount Policy

We will honor only one discount -- whichever is largest. You can't combine a 10% with a 25% discount to get a 35% discount. On this we can't be bribed.

#### Color of the Month

**January purple; February red; March green; April yellow; May whites**



## Nolting Quilting Machines



## Nolting Longarm Machines

Nolting has 5 main machines, each with different reaches: from 17" to 30" depending on the machine. They are sold with or without a frame, but after I saw & helped set up one of the steel frames this week, I recommend buying the frame. All machines, except for the Standard--the most economical machine-- have a stitch regulator. I recommend a stitch regulator. All machines can be equipped with a computer and there are a couple of different ones to choose from. In addition, you can get an extended table base so that you can use rulers, you can get larger bobbins on some of the models and on the frames you can get hydraulic lifts to raise and lower the tables. In the coming weeks, I will print out more information on each model.

The best entry level machine is the Fun Quilter. It comes in 17", 20" & 23" reach. It comes with the Intellistitch Equalizer stitch regulator, standard speed control, needle up/down, and fixed handles in the front & rear. This machine can also be equipped with a computer.

The Pro Machine has the Intellistitch Turbo stitch regulator, single stitch option, standard speed control, needle up/down and customizable handles in the front & rear. The Pro Machine comes in 20", 24" and 30" reach with 10-12" of inside height. There are easy dials on the front to set stitch length and other options. This machine can also be equipped with a computer.

The NV Machine is the newest in the fleet of Nolting machines. This machine has a touch screen with programmable stitch regulation. You can stitch in 4 different stitch modes plus single stitch and needleup/down. It also has an adjustable brightness LED work light. This machine can also be equipped with a computer.

---

Normal Shop Hours:  
**Monday-Saturday 10-6**  
**Sunday 1-5**

**Closed first Sunday of month (and some holidays)**  
**New Hours for Winter Time (starting Nov 5-May 22)**  
**Monday-Saturday 10-5, closed Sundays unless a class is scheduled. Then we're open 1-5. Check the schedule.**

Join the fun and come feel the difference of quality fabrics.

Happy quilting!

Sincerely, Barbara Boyer  
Around the Block  
307-433-9555  
[www.aroundtheblockquilts.com](http://www.aroundtheblockquilts.com)



Around the Block | 453 Vandehie Suite 120, Cheyenne, WY 82009

[Unsubscribe office@jubjub.com](mailto:office@jubjub.com)

[Update Profile](#) | [Constant Contact Data Notice](#)

Sent by [barbara@aroundtheblock.ccsend.com](mailto:barbara@aroundtheblock.ccsend.com) powered by

