

Exciting news!

We are launching a new web page! This is a soft launch. I don't have my domain name connected to it yet--that's going to take a couple of phone calls. And we will continue to add stuff as the months go along.

Fabric will be listed according to brand, newsletters will be posted, the calendar is interactive so you can click on it to get more info on each class. We may have sign ups on line, although you won't be able to pay on line. There are pictures of some of the quilts—the ones we can capture.

Things we want to do is have a page for the Mystery Quilts, pages for pictures, pages for announcements and sales. I hope to be able to keep the content fresh and up to date.

Michelle Gess is the inspiration behind this new look. She has done all the work. And I am learning. So for now, you can click on this link to see what we're up to. Let me know what you think.

<https://sites.google.com/view/aroundtheblockquiltshop/home>



January 4, 2025



Has this been happening to you this week?

So yesterday was Monday, because New Year's was Wednesday. And Monday always follows New Year's. But I'm not sure what that makes today. But I know that tomorrow will be New Year's Eve, because it's Saturday, and Sunday will be....I don't know. New Year's? Just Sunday with a football game? And then we'll start the week off right on Monday Jan 2 or is it 6? I just don't know.

And it doesn't help that college games are being played on Wednesdays and Fridays and Pros are playing on Saturday. And Sunday. I made my ham & bean soup Wednesday night so that I could have it for New Year's Eve tomorrow, which was yesterday. That's right, right? Or is it tomorrow? I watched the Rose Parade yesterday and saw the ball drop a couple of times, both times live according the tv screen, from New York on Tuesday. New Year's Eve, I think. I wake up in the morning not knowing whether I can sleep in, make brunch, exercise at 9, or go to the shop and teach because it's Block of the Month.

It would help if the weather would cooperate. It rained on Christmas Eve. So it's spring. But Hallmark is still showing all of their Christmas Movies and 100.7 FM on the radio dial was still playing 24 hour Christmas after Christmas.

Maybe it's the parallel universe that is intruding on us. No, I'm not talking about the multiverse which is a Marvel contraption that makes some sense if you don't think about it. No this is the parallel universe discovered in Antarctica. Seriously.

This one operates opposite the laws of physics, the ones which apparently rule our universe. I suspect some of the current physics rules are more like guidelines, ready to be violated when some better explanation comes along. But according to the article this discovery "could redefine our understanding of reality and the cosmos." Since I've already had a redefining of reality this week, I suspect that a parallel universe is already operating here.

So this discovery happened when high flying balloons in Antarctica found some unusual stuff recently—maybe recently. It might have been 5 years ago. Just keep reading. This might all make sense.

NASA's Antarctic Impulsive Transient Antenna (ANITA) experiment was designed to detect high-energy cosmic particles, which come down from space, and they use great big balloons flown over Antarctica to gather the research.

High-energy cosmic particles typically travel downward from space as Earth's solid core blocks their upward trajectory. Meaning, they don't hit Earth and then bounce back up. This is important to remember. ANITA is designed to detect these particles. But the weird thing that happened is that the scientists found these particles coming up from earth, not down from space—something they shouldn't be doing. They don't or can't bounce back up. Apparently.

Conclusion? The particles are traveling backwards and exist in another universe. At least that's one explanation.

“Okay, wait a minute Dr. Strange,” said Becca, trotting in from sunbathing on the cot in the front yard. She wanted me to put the pool back up, but I told her it was winter and she looked at me like I was nuts.

“Are you saying just because NASA discovered some particles moving in a different way than expected it automatically means there is a parallel universe AND that it's moving backwards? That sounds....well, nuts,” she said. “And this was definitely confirmed by flying balloons over Antarctica?”

“Well, that's the story that hit the internet this week.”

“Where did it come from, then,” she asked.

“Well, the New York Post, the Daily Star, ...” I said. “Oh, and the internet and a story written by AI.”

“Ah, the giants in the field of news reporting,” Becca said sagely. “What does a competent news source suggest?”

“Well, I was just getting to that. The original story about these bizarre cosmic particles started back in 2020.”

“So the current stories are based on something that happened 5 years ago? We are that hard up for news that we have to dig out something that’s 5 years old?” Becca scoffed.

“Slow news day, apparently,” I said. “Anyway, the principal ANITA investigator Peter Gorham, an experimental particle physicist at the University of Hawaii, suggested that these high-energy cosmic tau neutrinos weren’t supposed to behave like that, bouncing up from earth rather than streaming down from space. He thought that maybe the particles could behave that way if they changed into a different type of particle before passing through the Earth and then it could bounce back up.”

“So how do you get to a parallel universe from that?” Becca asked.

“Well, you don’t really,” I said. “It could also be dark matter.”

“That’s comforting,” Becca said dryly.

“Here’s the problem,” I said, ignoring her. “This ANITA picks up radio signals from space. But some of these signals are skimming the earth before they hit ANITA and others bounce off the ice. Things that these space radio signals don’t do. Thus the dilemma. There is also a contraption called the IceCube, which is supposed to register these space neutrinos as they pass through the ice. But these neutrinos that ANITA has picked up have not been detected by IceCube, like they should have been,” I explained. “This all comes from the Science section in Discover magazine,” I added.

“And because none of that is understandable,” Becca said, “it’s more likely the truth. In other words, they can’t explain why these particles are not behaving in the way the scientists think they should. Therefore, the logical conclusion is that they are from parallel universes and they’ve somehow found their way to our universe. And not only that, the parallel universe in question is moving backward.”

“Yeah,” I said. “Actually, the parallel universe that was discovered is not the one moving backward. We are.”

“Of course you are,” Becca said kindly. “You got some hot chocolate for Christmas. Why don’t we make you a cup and you can go lie down, watch a nice Hallmark Christmas movie, and take a nap.”

“Even Neil deGrasse Tyson admits that the various universe theories are possible. In part because the theories of quantum mechanics, or the study of the very small, combined with Einstein’s theory of general relativity, or the study of the very large, produce conflicting theories when combined,” I said as I sat down with my hot chocolate.

“Of course he does,” said Becca soothingly, as she turned on the tv. “Now, let’s talk about putting in a heated pool in the backyard.”



## .Spring Challenge

I know, winter just got here, but this challenge will end on May 3, so spring. We're looking forward.

There are two parts to the challenge, but you don't have to participate in both parts. First, we are going to be making the Potato Chip quilt block. This block is all over the internet and it has been around for a long time, under various names.



The first challenge is to make a potato chip block quilt that is 50" X 60" (minimum size, you can make it bigger). Instructions will follow. You can set these blocks any way you want. I'm showing the quilt with simple 2 1/2" sashings and posts, a 2 1/2" inner border and a 5" outer border, but I will provide additional settings in the coming weeks.

Your quilt top must be finished by May 3.

The second part of the challenge is to make a block for sharing. You can make as many sharing blocks as you like. Each time you bring a block to share, your name will be put into a drawing. Depending on how many blocks we receive, we may have several winners. Each winner will receive a grouping of blocks that you can turn into a quilt! For example, if we get 48 blocks, we will have 4 winners of 12 blocks each. If we get 12 blocks, we'll have one winner.

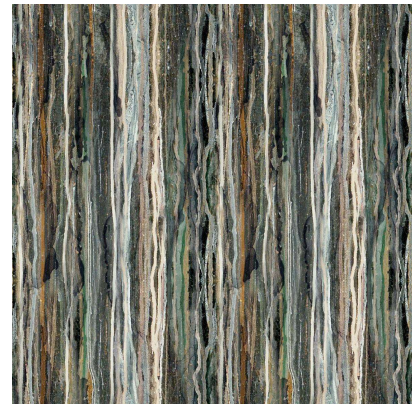
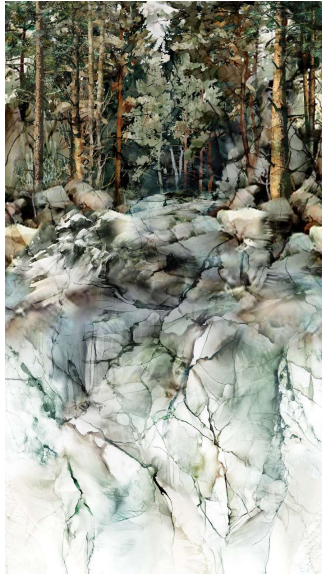
The pattern starts with 2 1/2" pieces. You need 18, 2 1/2" X 4 1/2" rectangles for each block. Note: Some of the potato chip blocks use 2" strips. You are welcome to use that size, but for the blocks you turn in, you must use 2 1/2" strips.

Click on the link for the pattern:

Spring mystery 2025



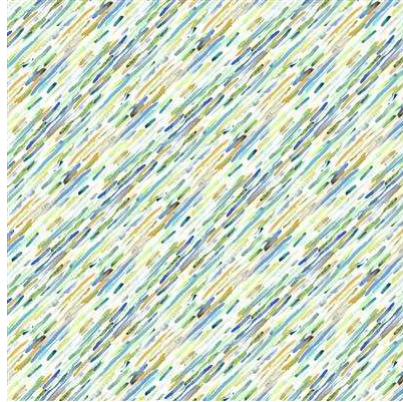
New Fabric



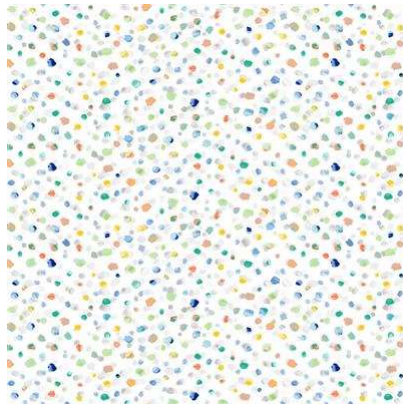
From Northcott (second image is also in wideback)



From Marcus Bros and  
Timeless



From Clothworks



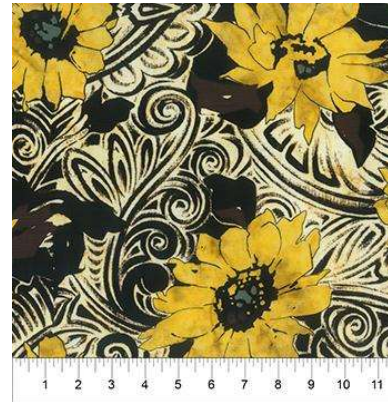
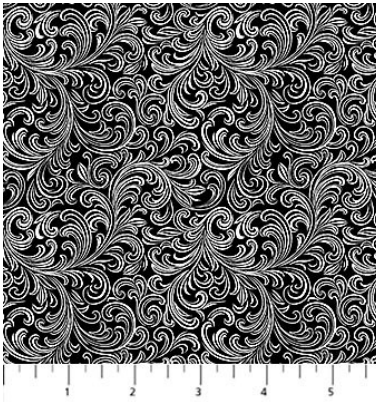
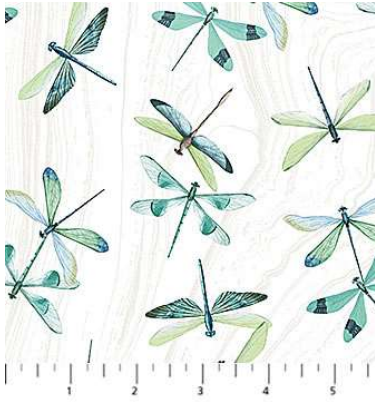
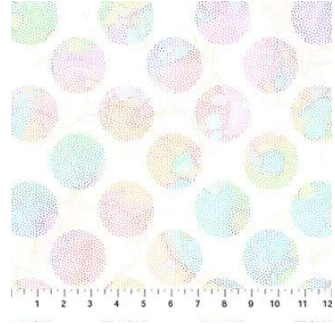
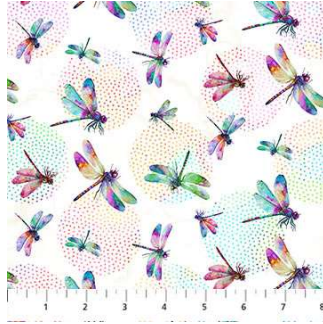
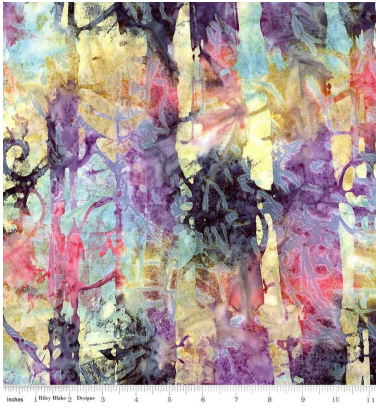


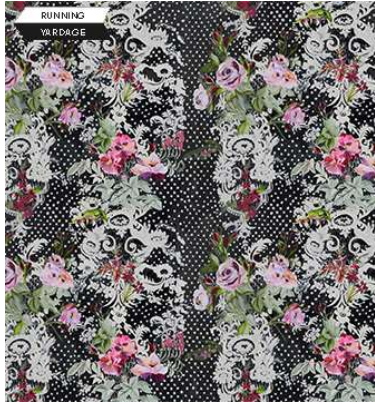


From Michael Miller

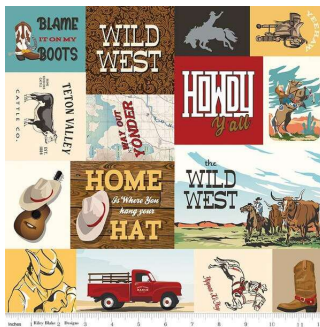


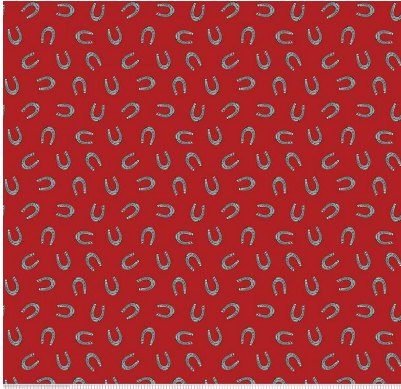
From Northcott





From Kennard & Kennard





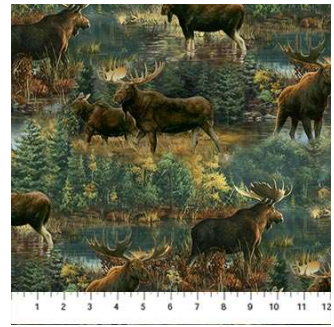
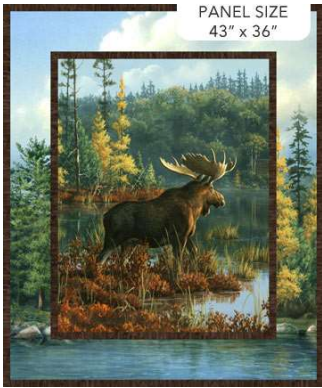
And one other fabric with the lyrics Home on the Range printed on the fabric. Couldn't grab a pic

From Riley Blake

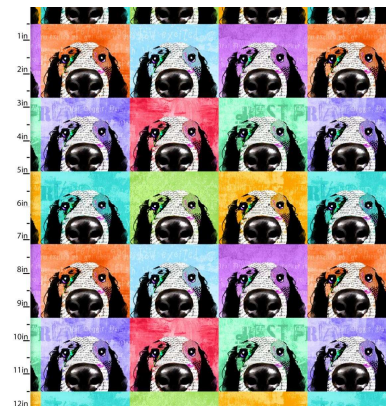
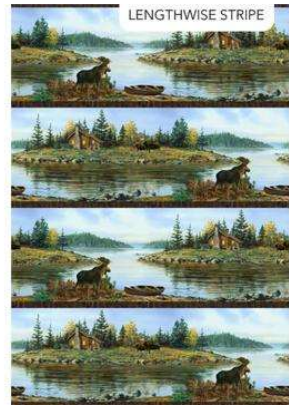
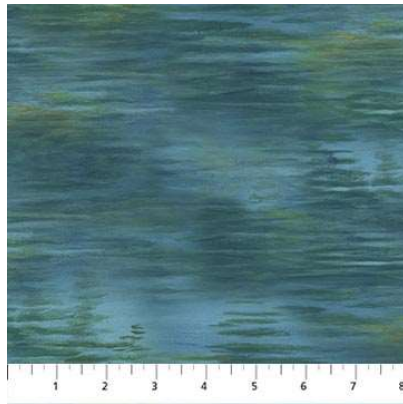


From Quilting Treasures

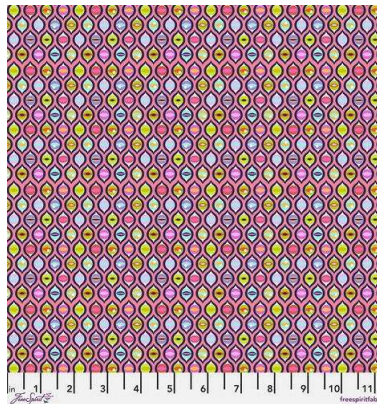
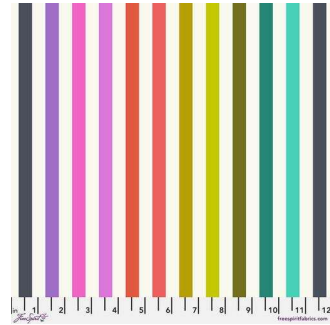
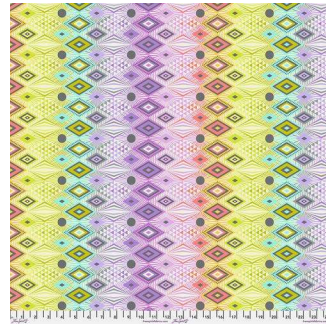
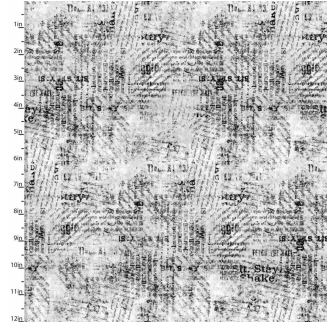
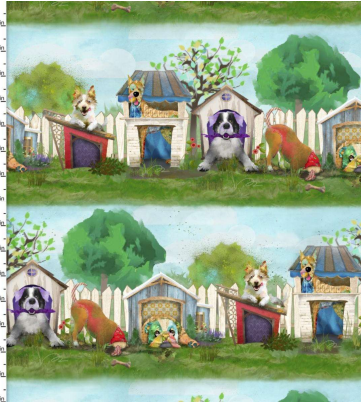
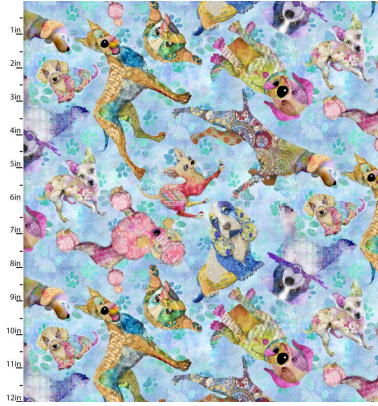


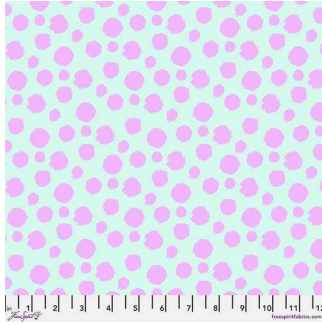


From Northcott



From 3 wishes





From Tula Pink



Full Moon Days: January 13 (Monday), February 12 (Tuesday), March 15 (Saturday  
NOTE: observed), April 12 (Saturday), May 12 (Monday) NOTE: These did not get onto  
the calendar

# January 2025

Sunday	Monday	Tuesday	Wednesday	Thursday	Friday	Saturday
		CLOSED	1 CLOSED	2	3	4 10:30 BOM <u>Pillow Case</u> Party! 1-4
Pi5 CLOSED	6	7 Hand Sewing club 2-5	8 Knit Pickers 2-5	9	10	11 Free Embroider Club 10-noon Flannel Snowballs 1-5
12 CLOSED	13	14 Hand Sewing club 2-5	15	16	17	18 Delectable Mountains 10:30-4
19 CLOSED	20	21 Hand Sewing club 2-5	22 Knit Pickers 2-5	23	24	25
26 CLOSED	27	28 Hand Sewing club 2-5	29	30	31	



# February 2025

Sunday	Monday	Tuesday	Wednesday	Thursday	Friday	Saturday
						1 10:30 BOM Machine Binding 1-4
2 CLOSED	3	4 Hand Sewing club 2-5	5	6	7	8 Free Embroider Club 10-noon
9 CLOSED	10	11 Hand Sewing club 2-5	12 Knit Pickers 2-5	13	14	15 Counterpoint Part 1 10:30-4
16 CLOSED	17	18 Hand Sewing club 2-5	19	20	21	22 6 Quilts, One Book 10:30-4
23 CLOSED	24	25 Hand Sewing club 2-5	26 Knit Pickers 2-5	27	28	

# March 2025

Sunday	Monday	Tuesday	Wednesday	Thursday	Friday	Saturday
						1 10:30 BOM Tennessee Waltz Part 1 1-5
2 Beginning Quilting 1-4	3	4 Hand Sewing club 2-5	5	6	7	8 Free Embroider Club 10-noon Merry Snowmen 1-4
9 Beginning Quilting 1-4	10	11 Hand Sewing club 2-5	12 Knit Pickers 2-5	13	14	15 <b>NATIONAL QUILT DAY</b>
16 Beginning Quilting 1-4	17	18 Hand Sewing club 2-5	19	20	21	22 Counterpoint Part 2 10:30-4
23 Beginning Quilting 1-4	24	25 Hand Sewing club 2-5	26 Knit Pickers 2-5	27	28	29 Cats in PJs 10:30-4
30 Beginning Quilting 1-4	31					

# April

Sunday	Monday	Tuesday	Wednesday	Thursday	Friday	Saturday
		1	2	3	4	5 10:30 BOM Tennessee Waltz Part 2
6 Beginning Quilting 1-4	7	8 Hand Sewing club 2-5	9 Knit Pickers 2-5	10	11	12 Free Embroider Club 10- noon
13 Beginning Quilting 1-4	14	15 Hand Sewing club 2-5	16	17	18	19 Fanfare 10:30-4
20 CLOSED Easter	21	22 Hand Sewing club 2-5	23 Knit Pickers 2-5	24	25	26 6 Quilts, One Book 10:30-4
27 Beginning Quilting 1-4	28	29 Hand Sewing club 2-5	30			

# May 2025

Sunday	Monday	Tuesday	Wednesday	Thursday	Friday	Saturday
				1	2	3 10:30 BOM T-Shirt Quilt Part 1 1-4
4 CLOSED	5	6 Hand Sewing club 2-5	7	8	9	10 Free Embroider Club 10-noon Merry Snowmen 1-4
11 CLOSED	12	13 Hand Sewing club 2-5	14 Knit Pickers 2-5	15	16	17 Drip Drop 10:30-4
18 CLOSED	19	20 Hand Sewing club 2-5	21	22	23	24 T-Shirt Quilt Part 1 10:30-4
25	26	27 Hand Sewing club 2-5	28 Knit Pickers 2-5	29	30	31

## Ongoing Classes & Clubs

**Block of the Month** First Sat of month 10:30-11:15 FREE Barb Boyer

Join at any time. You get a free fat quarter if you come to class with the previous month's completed block. This year the challenge will be ... come in January and find out!

**Hand Embroidery Club** 2<sup>nd</sup> Sat. of the month, 10-noon FREE Kathy Sconce

If you want to learn to hand embroider or just brush up your technique, join us on the second Saturday of the month from 10 to noon. You can work on your own projects or

you can join the project we are doing, which is Modern Herbal Block of the Month by Sewn Wyoming.

**Knit Pickers' Club** 2<sup>nd</sup> and 4<sup>th</sup> Wed of each month, 2-5 Carol Moler

Come join our Knit Pickers= Club. We knit 2 days a month every second and fourth Wednesday, from 2-5. The Club is open to all skill levels and, despite the name, includes crocheters as well. We want to share what we've learned, find new patterns, and simply just sit and knit. We may work on some felting projects, fingerless mittens, mittens, and socks. We can even help you get started—teach you the basics.

**Hand Sewing Club** every Tuesday afternoon 2-5

This club is open to everyone. Bring your hand sewing (embroidery, binding, knitting, crochet, etc) and sit & stitch.

**Toad Toters Club**

On full moon days (as noted in the calendar) you will get 20% off all purchases (not otherwise discounted) that you can fit in your bag. You must bring your bag to participate.

Full Moon Days: January 13 (Monday), February 12 (Tuesday), March 15 (Saturday NOTE: observed), April 12 (Saturday), May 12 (Monday)

We will honor only one discount -- whichever is largest. You can't combine a 10% with a 25% discount to get a 35% discount. On this we can't be bribed.

**Color of the Month and Book of the Month**

**January dogs and cats; February red; March green; April blue; May flowers**

## **January classes**

### **Pillowcase Party Sat Jan 4 1-4 Cost of class is one pillowcase kit--\$14 Barb Boyer**

Learn the easy way to make a pillowcase, hot dog style. I have a simple way to cut all three fabrics (case, cuff and trim) at once, which guarantees the fabrics will all line up properly.

### **Flannel Snowballs Sat Jan 11 1-4 \$35 Barb Boyer**

Learn to work with flannel while making this easy to do snowball quilt. You can use scraps for the snowballs, and you can make it as big as you like. Pattern will be given out in class.

### **Delectable Mountains Sat Jan 18 \$45 Barb Boyer**

From the book *Scrappy & Happy Quilts, Limited Palette, Tons of Fun* by Kate Hendersen. The book is out of print, but you can find it on used books sites, like Amazon. To make the mountains, you will also need the Creative Grid Ruler, 2 Peaks in One, and a special ruler for the largest mountain will be provided in class. The mountain block is a form of a "kite" construction. You will learn how to use the templates to create perfect mountains.

## **February Classes**

### **Machine Binding Sat Feb 13 1-4 \$45 Jean Korber**

This is hands on class. You will need a small project (10" to 40", table runner, small wall hanging, place mat, etc) that is quilted and ready for binding. In class Jean will show you how to cut your binding, press it, and stitch it down (DO NOT CUT YOUR BINDING IN ADVANCE), how to stitch it down & miter the corners and then how to apply decorative stitches to the edge. In class you will cut your binding, stitch it to your project, miter your corners and then stitch it down by machine on the other side, using decorative stitches.

### **Counterpoint Sat Feb 15, 10:30-4 AND Sat March 22 10:30-4 \$45 Jean Korber**

The pattern is by Mountain Peak Creations. The quilt provides large spaces to showcase fabrics. Follow the pattern for fabric amounts. While the quilt has few parts to sew, it is tricky to get things lined up properly. We will show you the easy way to keep the quilt square and perfectly pieced. No special rulers are required.

**6 Quilts, One Book Sat Feb 22, April 26, June 28, Aug 30, Oct 25, Nov 22 10:30-4 \$140 for all six classes or \$35 per class. Jean Korber & Barb Boyer will team teach the class.**

6 quilts, 1 book, every other month, 1 price for all 6 classes. (or \$35/class if you pick & choose). This is our third year doing 6 quilts out of one book. This year the book is a Christmas book, but don't be fooled. Our sample quilts include a Halloween quilt, a dog quilt, a wildlife quilt, an autumn flavored quilt, a star quilt (the Christmas quilt) and a dragon quilt. We want you to learn something new in each class. The book is Simply Modern Christmas by That Patchwork Place. This is another out of print book so look for it on the used sites, like Amazon. The first quilt we will teach is Argyle. 2 is Coming Together, 3 is Joy, 4 is Funky christmas, 5 is Snowball Games, and 6 is Peppermint Float

### **March Classes**

**Beginning Quilting 8 weeks \$65 Barb Boyer Starting Sun Mar 2**

This comprehensive 8-week course will introduce to you almost everything you need to know about piecing a quilt top. Along the way you will learn about color, batting, thread, machines and various techniques to give you the skills to make almost any quilt.

**Tennessee Waltz Sat Mar 1 and Sat April 5, 1-4 \$45 Barb Boyer**

This is a classic quilt design that incorporates the 54-40 of Fight block and a snowball block. The result? The quilt will look curvy, but it's all pieced straight. Pattern will be given out in class. You will need the 2 Peaks in Once ruler by Creative Grid. Yardage needed for a 61" X 70" is app. 2-3 yards of the focus fabric for the center squares, 1 ½ for the stars and 1 yard for the 4-patch squares. Border app. 2 yards.

**Merry Snowman Sat Mar 8, April 12, May 10 1:00-4 Cindy Hamann \$45**

Pattern Merry, Merry Snowmen by Bunny Hill Designs. The applique in the sample quilt is done with wool. We will teach both wool options, traditional needle turn or or finished edge applique, or raw edge applique. Skill level: Confident beginner

**NATIONAL QUILT DAY SATURDAY MARCH 15 DEMOS AT NOON**

**We will have a special sale for National Quilt Day. We will have demos and other activities going on, TBA.**

**Counterpoint Sat Feb 15, 10:30-4 AND Sat March 22 10:30-4 \$45 Jean Korber ongoing**

**Cats in PJs Sat March 29 10:30-4 \$40 Barb Boyer**

This is an Elizabeth Hartman Cats in Pajamas pattern. Follow pattern instructions for fabric amounts. And think creatively about fabrics for the cats and for the PJs. Footballs, stripes, dogs, plaids, ballerinas—anything you can think of for cute PJ fabrics. And the cats can be all different colors, and some may have different tail and ear colors, as well.

**April Classes**

**Tennessee Waltz Sat Mar 1 and Sat April 5, 1-4 \$45 Barb Boyer ongoing**

**Merry Snowman Sat Mar 8, April 12, May 10 1:00-4 Cindy Hamann \$45 ongoing**

**Fanfare Sat April 19, 10:30-4 \$45 Jean Korber**



Fanfare pattern by Krista Moser required. Follow pattern instructions for fabric requirements. You will also need the Creative Grid 60 degree triangle ruler, 8 1/2" size.  
Skill level: Intermediate

**6 Quilts, One Book Sat Feb 22, April 26, June 28, Aug 30, Oct 25, Nov 22 10:30-4 \$140 for all six classes or \$35 per class. Jean Korber & Barb Boyer will team teach the class.**

The second quilt we will teach is Coming Together.

### **May Classes**

**T-Shirt Quilt Sat May 3 & 24 1-4 \$45 Barb Boyer**

So you've got all these t-shirts and want to turn them into a quilt? It's easy, but you need the right tools. The class is taught in 2 parts: First, preparing your t-shirts, and second, designing your top—which is where I come in, because I can help with all of the math that might be involved.

**Merry Snowman Sat Mar 8, April 12, May 10 1:00-4 Cindy Hamann \$45 ongoing**

**Drip Drop Sat May 17 10:30-4 Barb Boyer \$45**

The quilt is in Graphic Quilts book by That Patchwork Place. We have copies. Templates will be provided for the curved pieces. Follow fabric requirements in the book. Skill level: Intermediate



Normal Shop Hours:

**Monday-Saturday 10-5:30**

**Sunday 1-5**

**Closed first Sunday of month (and some holidays)**

**New Hours for Winter Time (starting Nov 5-May 22)**

**Monday-Saturday 10-5, closed Sundays unless a class is scheduled. Then we're open 1-5. Check the schedule.**

Join the fun and come feel the difference of quality fabrics.

Happy quilting!

Sincerely, Barbara Boyer

Around the Block

307-433-9555

[www.aroundtheblockquilts.com](http://www.aroundtheblockquilts.com)

