



April 1, 2020

**Keep up the good work!**

## **NEXT REQUEST**

We've got the ties for the face shields covered. Any ties that you have made, please drop off because we will use the ties as we start running out of elastic. I keep getting donations of elastic, but soon I think the bottoms of our sewing drawers will be emptied.

### **NEW REQUEST:**

**The VA has asked for 400 2-layer cloth masks. We deliver 120 already so just 280 to go! I've told the VA that we can fulfill this request over the next few days. We had about 200 kits available at the store today. We will have more tomorrow.**

### **Different New Project**

**We just got in precut low-lint SMS fabric, called Kimtech Pure Kinguard Sterilization Wrap. The info on this fabric states it is tear resistant and flame resistant. It is a bacterial filtration efficiency at 96.2%. This info come from the package labeling. These masks are made similarly to our 2-layer cotton basic protective mask: but with a little cutting differences because of how the fabric comes.**

#### **NOTE: DO NOT IRON**

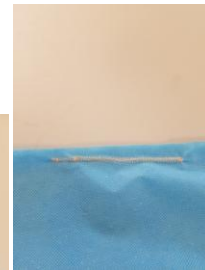
From the blue square, cut a 10" X 12" rectangle. These squares are about 15" X 15". Then cut five 1" X 15" strips. From the remaining bit, cut as many 1" strips as you can. The 1" strips will be used for ties and you will have to sew them together. You need work with every scrap to be able to get the ties long enough. There are no edges to worry about as this fabric

does not ravel. Be patient with the pictures. It is very difficult to get them placed in this program. I can't just drag & drop.

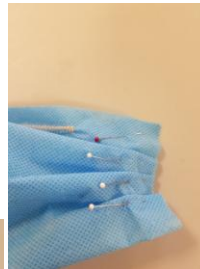
Step 1. Take the 10" X 12" rectangle and fold in half so that it measures 6" X 10".



At the top of the mask, center a 5" piece of wire in between the two layers and about 1 inch below the top. Zig Zag across the wire. (I used 1.2 length and 5.3 width) This is not a mask that you turn inside out, so you don't have to worry about that. Just stitch through both layers.



Step 2. Take your regular 3 tucks on the side of the mask and pin in place. Try to get the sides to be about 3" wide when you're done.



Step 3. Stitch all the way around once.



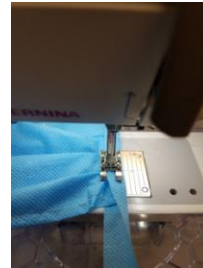
Step 4: Ties. Take all the ties and stitch end to end to make one long strip. Cut in half.



Step 5: You are going to stitch the ties onto the mask on the short ends, over the tucks. Fold the tie in half wrong sides together (DO NOT IRON) and center over the tucks. Pin in place. Then stitch from one end of the tie to the other end of the tie, catching the mask in between the fold of the tie. Pretend you are sewing a single fold bias binding onto a quilt,

catching both sides at once as you sew.

Make sense? I actually stitched the tie to the mask, then continued stitching to the end. Then I turned the mask around and finished sewing the other end. It seemed easier to handle that way.



You're done.



## **New Store Policies**

We are going to start being very careful at the store, and since we are in the mask making business, we are going to start wearing masks at the store.

So everyone who comes in for shopping, must wear a mask. I will also limit the number of shoppers in the store at any one time and we will all keep our distance from each other.

You can still order by phone and pay by credit card. Drive to the store, call and I will walk your purchases out to you. If you can't get to the store, I will make arrangements to get your purchases delivered to you. If you call & can't get through, try again please. It never fails that I am on the phone when another call comes in.

The Institute for Health Metrics has compiled statistics for each state, based on stats received from hospitals and current death rates caused by the virus. The models also assume appropriate social distancing. The

Institute puts out peak at May 4. The Institute has calculated the need for beds in Wyoming and has determined we are good on hospital beds, but short by a few of ICU beds. And while the peak may happen in May, the projections for this disease continue for Wyoming into July.

As we all know, stats will vary from day to day as more information comes in, as more testing is done, as more shut downs are ordered and more careful behavior is observed.

So we will start being even more careful in the store and by wearing masks we are not deluding ourselves into thinking the mask will protect us. It will be a reminder that we need to be careful about keeping our distance, not going in public if we are ill, watching what we touch and washing our hands and disinfecting regularly.

If you are just coming into the store to drop off masks and pick up more kits, the basket is right inside the door. You don't need a mask for that activity. But if you are coming into the store for any other reason, please wear a mask.

## Basic Protective Mask Pattern

The pattern is now posted on my website. We will have a tutorial on how to make ties posted on the site soon.

<http://www.aroundtheblockquilts.com/pdfs/Basic-Protective-Mask-Pattern-Fabric-Requirements.pdf>

\*\*\*\*\*

Join the fun and come feel the difference of quality fabrics.

Happy quilting!

Sincerely,

Barbara Boyer  
Around the Block  
307-433-9555  
[www.aroundtheblockquilts.com](http://www.aroundtheblockquilts.com)